

POWER YOUR FUTURE

Ricardo Generator

LG30R

K4100ZDS

Prime Power: 30KW/37.5KVA

Standby Power: 33KW/41KVA



GENERATING POWER SOLUTIONS

Increased availability for new operations

Reliable, robust and versatile generator.
Ready to deliver power for a next job.

Increased uptime during operations

Once installed on the end-user-site, the generator will be ready to run: "peace of mind" operation.

Reduced transport and installation costs

The compact and robust design with integrated transport features enables faster and safer transport and installation.

Reduced service & maintenance costs

Longer service intervals.
Quicker and more efficient service jobs.

Premium resale value

Designed and built to last.

SAFETY

- Operate safely in accordance with proper operation manual.
- To prevent trouble and accidents, perform daily and preventive maintenance checks without fail.

Ricardo Series

10KVA--325KVA



Technical Data

Model	LG30R	
Rated prime power	kva	37.5
Rated standard power	kva	41
Rated voltage line to line	V	400/230
Rated current	A	54
Maximun sound level	dB(@7m)	≤85

Engine-Ricardo

Model	K4100ZDS	
Air intake system	Turbocharged	
Fuel injection system	Direct Inject	
No. cylinders	4	
Displacement	Liquid	4.15
Bore*Stroke	mm	95*115
Compression ratio	17	
Rated speed	r/min	1500
Rated net power(with fan)	Kw	42
Governor type	Mechanical	
Start Motor	V	12

Exhaust System

Exhaust gas flow	m ³ /min	/
Exhaust gas temp	°C	/
Max back pressure	kPa	10

Air Intake System

Max intake restriction	kPa	/
Consumption	m ³ /min	/
Air flow	m ³ /min	/

Fuel System

100% load(Prime power)	L/h	10.5
75% load(Prime power)	L/h	7.8
50% load(Prime power)	L/h	5.2
Fuel tank capacity	L	100

Lubrication System

Total system oil capacity	L	13
Oil consumption	g/kwh	≤4
Min oil pressure	MPa	0.2-0.4
(continuous operation)		

Cooling System

Total coolant capacity	L	12
Thermostat	°C	85-92
Max top tank temperature	°C	104

Alternator

Model	LONGKAI	LK184H
	STAMFORD	PI144J
Phase	3	
Voltage	V	400/230
Wiring Type	3 Phase 4 wire, Y type	
Bearing	1	
Power factor	0.8	
Frequency	Hz	50
Prime power	KVA	38
Exciter Type	Brushless, self-excitation	
Voltage regulation	%	±0.5
Protection Grade	IP 23	
Insulation grade	H/H	
Altitude	m	≤1000

Controller-DEEPSEA

Model	DSE6120
-------	---------

Protective functions:

- Low oil pressure
- High water temperature
- High/low voltage
- High Engine Temperature and Overspeed.
- Voltage regulator frequency regulator
- Emergency stop
- Start failure



Standard Features

- Engine(Ricardo)
- Radiator 50°C max,fans are driven by bel
- 24V charge alternator
- Alternator: single bearing alternator IP23, insulation class H/H
- Standard auto control system
- One set of air filter, fuel filter, oil filter
- Main line circuit breaker/MCCB
- Base fuel tank
- Two 12V batteries, rac and cable
- Exhaust system(Ripple flex exhaust pipe, exhaust siphon, flange, muffler
- User manual

Options

- Battery charge
 - Engine heater
 - Alternator heater
 - PMG
 - Water oil separator
 - Daily fuel tank
 - Remote control panel
 - Automatic transfer switch/ATS
 - Switch box
- Standard: ● Options:○

Warranty*

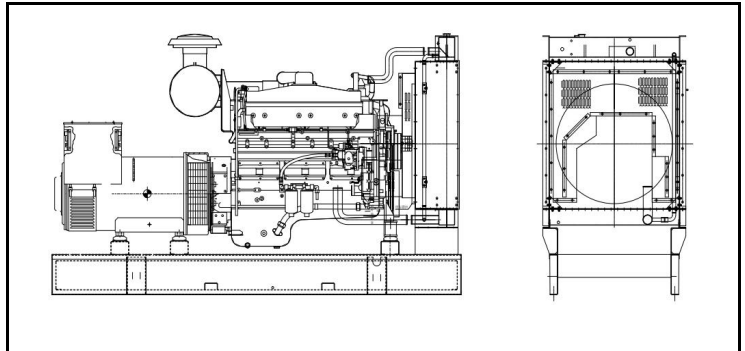
Ricardo KOFO Engine

12 months from date of purchase and 1000 hours.

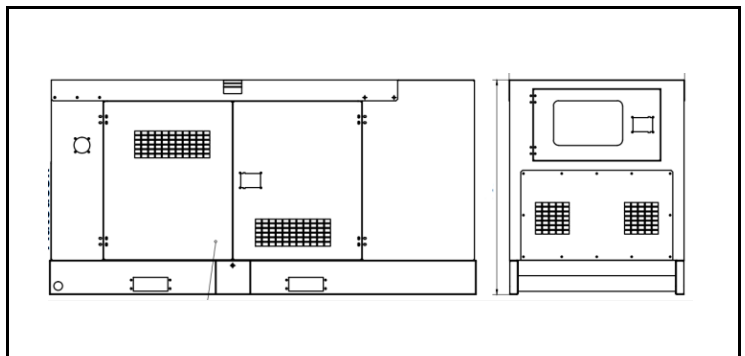
Generator

12 months from date of purchase or 1000 hours (whichever occurs first).

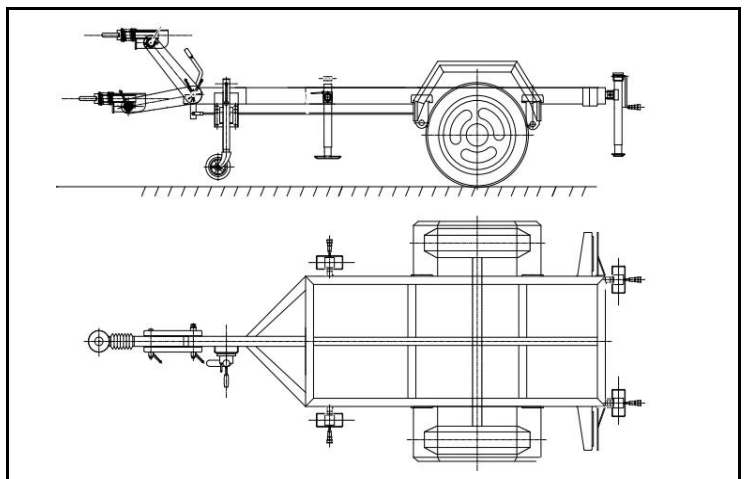
Unit Dimensions(Basic unit)



Open Type		
L*W*H	mm	1700*800*1150
Weight	kg	610



Silent Type		
L*W*H	mm	2170*850*1125
Weight	kg	890



Trailer Option		
L*W*H	mm	3300*1750*950
Max loading weight	kg	1150