

POWER YOUR FUTURE

Quanchai Generator  
LG17R

N490D

Prime Power: 17KW/21KVA  
Standby Power: 19KW/23KVA



## GENERATING POWER SOLUTIONS

### Increased availability for new operations

Reliable, robust and versatile generator.  
Ready to deliver power for a next job.

### Increased uptime during operations

Once installed on the end-user-site, the generator will be ready to run: "peace of mind" operation.

### Reduced transport and installation costs

The compact and robust design with integrated transport features enables faster and safer transport and installation.

### Reduced service & maintenance costs

Longer service intervals.  
Quicker and more efficient service jobs.

### Premium resale value

Designed and built to last.

#### SAFETY

- Operate safely in accordance with proper operation manual.
- To prevent trouble and accidents perform daily and preventive maintenance checks without fail.

Ricardo Series

10KVA--325KVA



## Technical Data

Model		LG17R
Rated prime power	kva	21
Rated standard power	kva	23
Rated voltage line to line	V	400/230
Rated current	A	30.7
Maximun sound level	dB(@7m)	≤70

### Engine-YANGDONG

Model		N490D
Air intake system		Natural
Fuel injection system		Direct Inject
No. cylinders		4
Displacement	Liquid	2.545
Bore*Stroke	mm	90*100
Compression ratio		18
Rated speed	r/min	1500
Rated net power(with fan)	Kw	22
Governor type		Mechanical
Start Motor	V	12

### Exhaust System

Exhaust gas flow	m <sup>3</sup> /min	/
Exhaust gas temp	°C	590
Max back pressure	kPa	10

### Air Intake System

Max intake restriction	kPa	/
Consumption	m <sup>3</sup> /min	/
Air flow	m <sup>3</sup> /min	/

### Fuel System

100% load(Prime power)	L/h	5.3
75% load(Prime power)	L/h	4.0
50% load(Prime power)	L/h	2.6
Fuel tank capacity	L	80

### Lubrication System

Total system oil capacity	L	5.1
Oil consumption	g/kw.h	≤243
Lubrication Type		Pressure, splash composite

### Cooling System

Total coolant capacity	L	6.5
Thermostat	°C	82-95
Max top tank temperature	°C	112

### Alternator

Model	LONGKAI	LK184E
	STAMFORD	PI144E
Phase		3
Voltage	V	400/230
Wiring Type		3 Phase 4 wire, Y type
Bearing		1
Power factor		0.8
Frequency	Hz	50
Prime power	KVA	22.5
Exciter Type		Brushless, self-excitation
Voltage regulation	%	±0.5
Protection Grade		IP 23
Insulation grade		H/H
Altitude	m	≤1000

### Controller-DEEPSEA

Model	DSE6120
-------	---------

Protective functions:

- Low oil pressure
- High water temperature
- High/low voltage
- High Engine Temperature and Overspeed.
- Voltage regulator frequency regulator
- Emergency stop
- Start failure



### Standard Features

- Engine
- Radiator 50°C max, fans are driven by belt
- 24V charge alternator
- Alternator: single bearing alternator IP23, insulation class H/H
- Standard auto control system
- One set of air filter, fuel filter, oil filter
- Main line circuit breaker/MCCB
- Base fuel tank
- Two 12V batteries, rac and cable
- Exhaust system(Ripple flex exhaust pipe, exhaust siphon, flange, muffler)
- User manual

### Options

- Battery charge
  - Engine heater
  - Alternator heater
  - PMG
  - Water oil separator
  - Daily fuel tank
  - Remote control panel
  - Automatic transfer switch/ATS
  - Switch box
- Standard: ●                      Options: ○

### Warranty\*

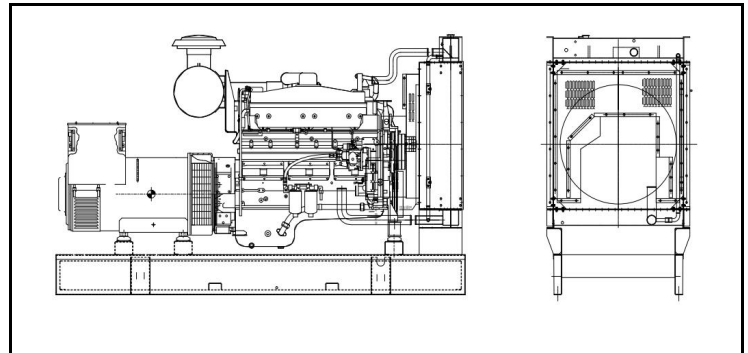
#### Ricardo Engine

12 months from date of purchase and 1000 hours.

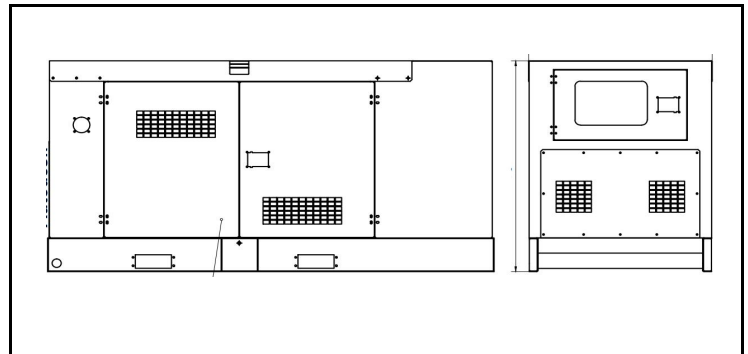
#### Generator

12 months from date of purchase or 1000 hours (whichever occurs first).

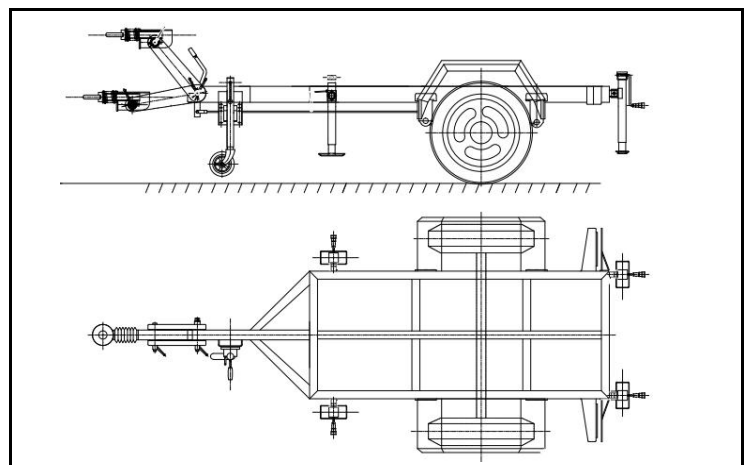
### Unit Dimensions(Basic unit)



<b>Open Type</b>		
L*W*H	mm	1500*750*1050
Weight	kg	630



<b>Silent Type</b>		
L*W*H	mm	1970*800*1075
Weight	kg	830



<b>Trailer Option</b>		
L*W*H	mm	3300*1750*950
Max loading weight	kg	1050