

POWER YOUR FUTURE

Ricardo Generator

LG120R

R6105BZLDS

Prime Power: 120KW/150KVA

Standby Power: 132KW/165KVA



## GENERATING POWER SOLUTIONS

### Increased availability for new operations

Reliable, robust and versatile generator.  
Ready to deliver power for a next job.

### Increased uptime during operations

Once installed on the end-user-site, the generator will be ready to run: "peace of mind" operation.

### Reduced transport and installation costs

The compact and robust design with integrated transport features enables faster and safer transport and installation.

### Reduced service & maintenance costs

Longer service intervals.  
Quicker and more efficient service jobs.

### Premium resale value

Designed and built to last.

### SAFETY

- Operate safely in accordance with proper operation manual.
- To prevent trouble and accidents, perform daily and preventive maintenance checks without fail.

Ricardo Series

10KVA--325KVA



## Technical Data

Model	LG120R	
Rated prime power	kva	150
Rated standard power	kva	165
Rated voltage line to line	V	400/230
Rated current	A	217
Maximun sound level	dB(@7m)	≤95

### Engine-Ricardo

Model	R6105BZLDS	
Air intake system	Turbo, Inter-cooled	
Fuel injection system	Direct Inject	
No. cylinders	6	
Displacement	Liquid	7.01
Bore*Stroke	mm	105*135
Compression ratio	16	
Rated speed	r/min	1500
Rated net power(with fan)	Kw	132.5
Governor type	Mechanical	
Start Motor	V	24

### Exhaust System

Exhaust gas flow	m <sup>3</sup> /min	/
Exhaust gas temp	°C	/
Max back pressure	kPa	10

### Air Intake System

Max intake restriction	kPa	/
Consumption	m <sup>3</sup> /min	/
Air flow	m <sup>3</sup> /min	/

### Fuel System

100% load(Prime power)	L/h	33
75% load(Prime power)	L/h	24.8
50% load(Prime power)	L/h	16.5
Fuel tank capacity	L	260

### Lubrication System

Total system oil capacity	L	17
Oil consumption	g/kwh	≤4
Min oil pressure	MPa	0.3-0.5
(continuous operation)		

### Cooling System

Total coolant capacity	L	32
Thermostat	°C	85-92
Max top tank temperature	°C	104

### Alternator

Model	LONGKAI	LK274F
	STAMFORD	UCI274F
Phase	3	
Voltage	V	400/230
Wiring Type	3 Phase 4 wire, Y type	
Bearing	1	
Power factor	0.8	
Frequency	Hz	50
Prime power	KVA	160
Exciter Type	Brushless, self-excitation	
Voltage regulation	%	±0.5
Protection Grade	IP 23	
Insulation grade	H/H	
Altitude	m	≤1000

### Controller-DEEPSEA

Model	DSE6120
-------	---------

Protective functions:

- Low oil pressure
- High water temperature
- High/low voltage
- High Engine Temperature and Overspeed.
- Voltage regulator frequency regulator
- Emergency stop
- Start failure



### Standard Features

- Engine(Ricardo )
- Radiator 50°C max,fans are driven by bel
- 24V charge alternator
- Alternator: single bearing alternator IP23, insulation class H/H
- Standard auto control system
- One set of air filter, fuel filter, oil filter
- Main line circuit breaker/MCCB
- Base fuel tank
- Two 12V batteries, rac and cable
- Exhaust system(Ripple flex exhaust pipe, exhaust siphon, flange, muffler
- User manual

### Options

- Battery charge
  - Engine heater
  - Alternator heater
  - PMG
  - Water oil separator
  - Daily fuel tank
  - Remote control panel
  - Automatic transfer switch/ATS
  - Switch box
- Standard: ●                      Options:○

### Warranty\*

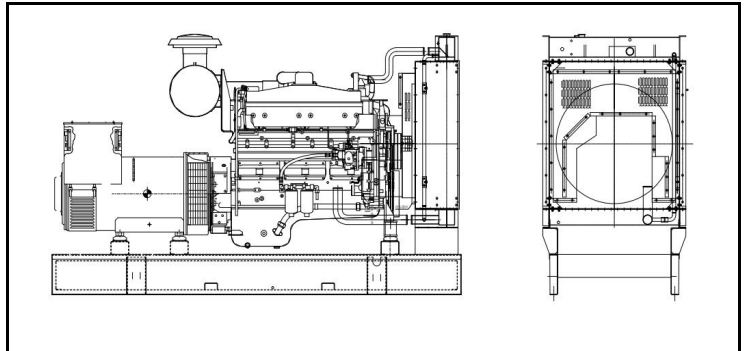
#### Ricardo KOFO Engine

12 months from date of purchase and 1000 hours.

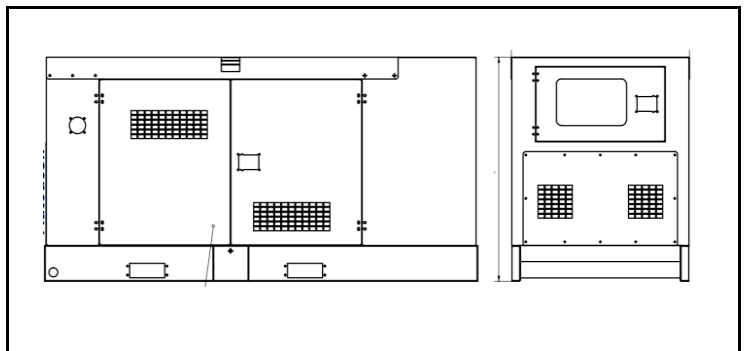
#### Generator

12 months from date of purchase or 1000 hours (whichever occurs first).

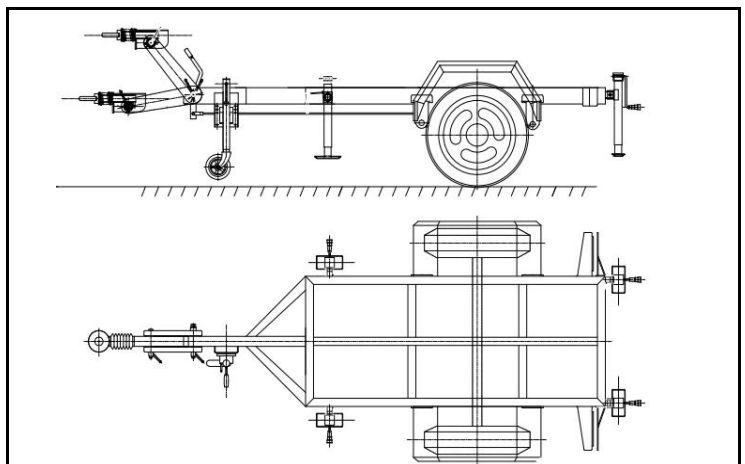
### Unit Dimensions(Basic unit)



<b>Open Type</b>		
L*W*H	mm	2450*1020*1550
Weight	kg	1650



<b>Silent Type</b>		
L*W*H	mm	3070*1080*1450
Weight	kg	2050



<b>Trailer Option</b>		
L*W*H	mm	4500*2000*950
Max loading weight	kg	2200